

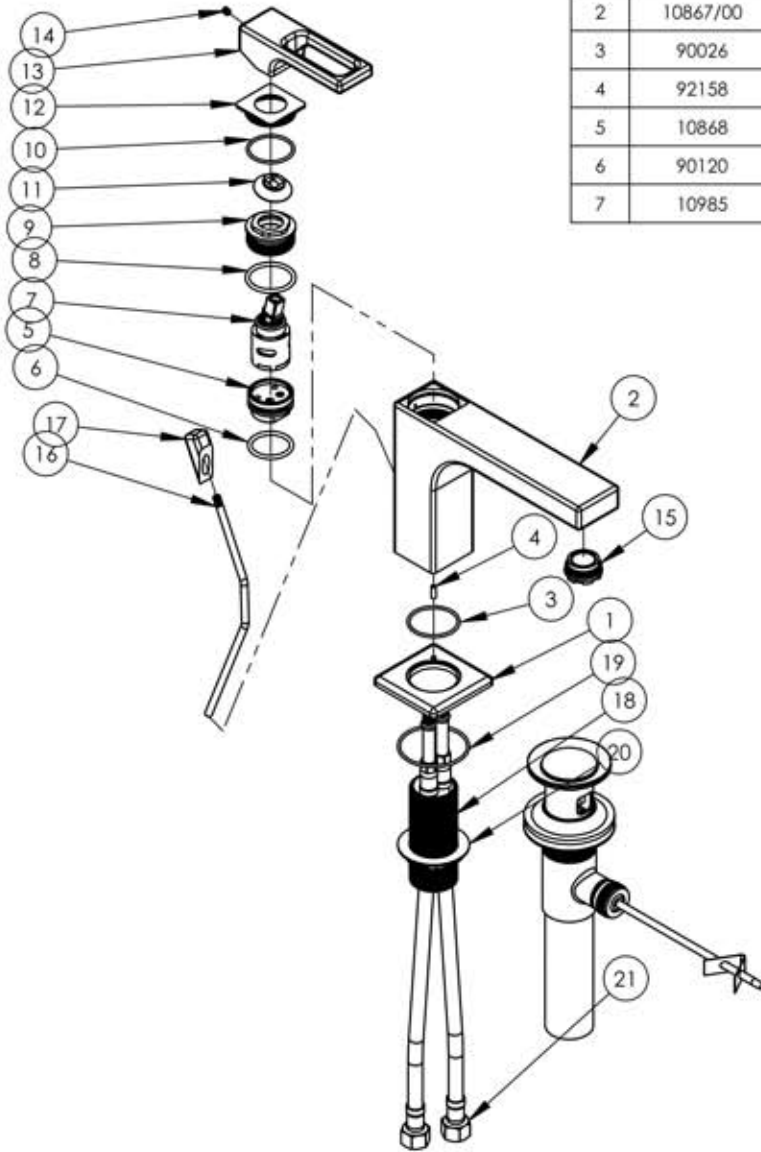
A

B

C

D

E



ITEM NO.	PART NUMBER	DESCRIPTION	QTY.
1	10871/00	ESCUTCHEON, SINGLE LEVER LAV	1
2	10867/00	SHORT BODY, SINGLE LEVER LAV	1
3	90026	O-RING, AS-568-026	1
4	92158	DOWEL PIN, 1/8" X 3/8"L	1
5	10868	PUCK, SINGLE LEVER LAV	1
6	90120	O-RING, - #120	1
7	10985	STSR CARTRIDGE ST231, 25MM OPEN	1

ITEM NO.	PART NUMBER	DESCRIPTION	QTY.
8	90122	O-RING, 1-1/8" ID X 3/32"THK. AS-568-122	1
9	10869	NUT, CARTRIDGE, SINGLE LEVER	1
10	90024	O-RING, 1-1/8"ID X 1-1/4"OD X 1/16"THK. AS-568-024	1
11	11040/00	DOVE, SINGLE LEVER LAV, HANDLE BASE	1
12	10870/00	COVER, SINGLE LEVER LAV	1
13	10876/00	SINGLE LEVER, WINDOW HANDLE 290 MIX SERIES	1
14	92008	SET SCREW, CUP POINT 8-32	1
15	10560	AERATOR, PCA CACHE 1.5GPM, M24X1.0 GREEN	1
16	10878/00	POP-UP ROD, SINGLE LEVER LAV	1
17	10877/00	POP-UP KNOB, SINGLE LEVER LAV MIX	1
18	10872	MOUNTING TUBE, SINGLE LEVER LAV	1
19	90031	O-RING, 1-3/4"ID X 1-7/8"OD X 1/16"THK. AS-568-031	1
20	92038	NUT, FLANGED 1-1/4"-20 THREAD	1
21	10561	HOSE, M8 EXT. - 3/8 COMP. X 16"L	2
22	3-046/00	POP-UP DRAIN ASSEMBLY	1
	10790	BODY, POP-UP DRAIN	1
	92091	PLASTIC GASKET	1
	92089	MOUNTING NUT	1
	92090	NYLON WASHER	1
	90505	CONICAL GASKET, RUBBER	1
	90506	RIM GASKET DRAIN	1
	10791	DRAIN RIM	1
	10796	STOPPER ROD	1
	10795	GUIDE, POP-UP DRAIN	1
	10792	STOPPER DRAIN	1
	90507	GASKET, STOPPER DRAIN	1
	90508	GASKET, BALL ROD	1
	10794	BALL ROD	1
	92088	NUT, BALL ROD	1
	10793	TAIL TUBE	1
	92092	CLIP POP-UP	1

ZONE	REV.	DESCRIPTION	DATE	APPROVED
REVISIONS				

1261 LOGAN AVENUE COSTA MESA, CALIFORNIA 92626 PHONE: 714.361.4800 FAX: 714.617.3120		PHYL RICH [®] Defining Luxury Since 1959	PROPRIETARY AND CONFIDENTIAL THE INFORMATION CONTAINED IN THIS DRAWING IS THE SOLE PROPERTY OF RISS MANUFACTURING. ANY REPRODUCTION IN PART OR AS A WHOLE WITHOUT THE WRITTEN PERMISSION OF RISS MANUFACTURING IS PROHIBITED.
---	--	---	---

-		INTERPRET GEOMETRIC DIMENSIONING & TOLERANCING IN ACCORDANCE WITH ASME Y14.5-2009 & ASME Y14.41-2003 STANDARDS. UNLESS OTHERWISE SPECIFIED, DIMENSIONS ARE IN INCHES. TOLERANCES ARE:		
NEXT ASSY	USED ON	FRACTIONS ±1/64"	DECIMALS X.X: ±.1 X.XX: ±.01 X.XXX: ±.005	ANGULAR ±.5°
APPLICATION		MATERIAL	NAME	DATE
FINISH		DRAWN	LLO	8/6/2015
DO NOT SCALE DRAWING		CHECKED	GRE	

SINGLE HOLE FAUCET, RING HANDLE, MIX SERIES LOW SPOUT

SIZE	ASM/PRT NO.	REV
A	290L-07/00	-
SCALE: 1:3.75	WEIGHT: lbs.	SHEET 1 OF 2

5

4

3

2

1